



GNWKCF

Greater Northwest Kansas Community Foundation

www.gnwkc.org

Our Vision Statement:

**Bringing rural communities together
for growth and success.**

Our Mission Statement:

**To revitalize your community
and enhance the well-being
of present and future generations.**

GNWKCF

Greater Northwest Kansas Community Foundation

107 West Bressler
PO Box 593
Bird City, KS 67731

Tel: 785-734-2556
Fax: 785-734-2536

E-mail: info@gnwkc.org

www.gnwkc.org

2013
ANNUAL REPORT

Table of Contents

Table of Contents.....	Page 1
Services to Affiliate Foundations	Page 1
Note from the Executive Director.....	Page 2
About the Foundation	Page 2
Current Funds of the Foundation.....	Page 3
Current Affiliate Community Foundations.....	Page 3
Bird City Century II Development Foundation.....	Page 4-8
Gove County Community Foundation.....	Page 9-10
Norton County Community Foundation.....	Page 11
Sheridan County Community Foundation.....	Page 12
Sherman County Community Foundation.....	Page 13-14
Kansas Wildlife Federation Foundation Fund.....	Page 15-16
Personalizing Your Philanthropy.....	Page 17
Giving Cards.....	Page 17
Statement of Financial Position.....	Page 18
2014 GNWKCF Board of Directors and Staff.....	Page 18

Services to Affiliate Foundations

GNWKCF offers two types of affiliate relationships to other community foundations, an Affiliate and a Partner.

An Affiliate Community Foundation is a collection of community funds to increase the philanthropic base for a geographic area. Both endowed and non-endowed funds are developed to provide financial support to 501(c)(3) and other qualifying charitable non-profit organizations and for charitable purposes to benefit area residents.

A Partner Community Foundation is an Agency Fund of GNWKCF. The Partner Community Foundation relationship is for Community Foundations who already have a 501(c)(3) and already have employees, and an operating endowment to sustain its operations.

Statement of Financial Position Year Ended December 31, 2013

Assets

Cash & Cash Equivalents	\$ 647,110.23
Investments	\$ 7,544,842.53
Other Assets	\$ 4,521,506.87
TOTAL ASSETS	\$ 12,713,459.63

Liabilities & Net Assets

Liabilities	\$ 320,857.70
TOTAL LIABILITIES	\$ 320,857.70
Fund Balance	\$ 12,392,601.93
TOTAL FUND BALANCE	\$ 12,392,601.93
TOTAL LIABILITIES & FUND BALANCE	\$ 12,713,459.63

*This is an un-audited Statement of Financial Position.

2014 GNWKCF Board of Directors & Staff

John Deeds, Chair	Gary Brubaker
David Hendricks, Vice-Chair	Clint Bursch
Lori Janicke, Secretary	Sherry Carmichael
Rod Klepper, Treasurer	Jill Partch
	C. Ned Smith
	Rod Young

Catherine A. Domsch, Executive Director
Darci Schields, Administrative Assistant
Mary Anne Orten, Summer Intern

Personalizing Your Philanthropy

Many people come to a point in their lives where they feel inclined to give back. They do so for a number of reasons, all very personal to them. What motivates you? Perhaps you feel strongly about a cause. Perhaps an organization has touched your life or the lives of loved ones. Maybe you want to create a legacy and set an example that inspires others to give. Or your giving is a way to get your family together and pass along your values to younger generations.

Who can give?

Anyone! Donors to the Foundation are from a variety of backgrounds with a common commitment to the community's well being. Whether setting up a named fund, contributing to an existing fund, or making an unrestricted gift, every person in the community can make a difference.

No gift is too small. The minimums referred to are only for **starting** a named fund. Gifts of \$25, \$10 or even \$1 can be made to any existing named fund. That is what makes this truly a **community** foundation.

For as many motivations as there are to give, there are ways of giving. The key to having a rewarding giving experience is finding the best fit—for your charitable priorities, financial goals, and personal preferences.

Contact us for a checklist that is designed to help you and your professional advisor determine the custom giving solution that's right for you.

Giving Cards

Much like retail gift cards, Giving Cards are given to celebrate birthdays, holidays, a job well done or other special occasions. Giving Cards can be redeemed to benefit any 501(c)(3) public charity in the United States (including schools and churches). Giving Cards can be purchased and redeemed through the Foundation's website at www.gnwkc.org.



Note from the Executive Director

What a year of growth for the Greater Northwest Kansas Community Foundation! GNWKCF now has five affiliate community foundations, a fund to support a statewide organization, and we increased our gifts 265% and our grants by 217%.

Community foundations are a very popular vehicle in grasping a portion of the transfer of wealth. Our goal is to grasp 5% of every estate transitioning from one generation to the next, which means 95% is left to family. That 5% left to a community foundation can generate millions in grants to local organizations and communities because the assets are pooled and invested.

Families, individuals, businesses and non-profit groups establish funds within a community foundation where they can contribute a variety of assets to be used for charitable purposes. Donors can then recommend grants from the fund, in the name of the fund or anonymously, to qualified non-profit organizations or governmental agencies.

Feel free to contact me for more information on GNWKCF and establishing a fund for the future of your community.

~ Cathy

About the Foundation

The Greater Northwest Kansas Community Foundation (GNWKCF) was formed to increase exposure and opportunities for philanthropy throughout northwest Kansas and the tri-state region. In 2009, realizing the benefits to regionalization, the Bird City Century II Development Foundation created and affiliated with GNWKCF. The hope was that other communities in the region would too become a part of GNWKCF, so that together we can build strong communities by building a strong regional community foundation to support its communities.

The Greater Northwest Kansas Community Foundation is an organization exempt from Federal income tax under section 501(c)(3) of the Internal Revenue Code, a public charity under section 509(a)(3), a supporting organization, and a non-profit corporation organized in the State of Kansas. With this designation, the Foundation is a supporting organization of the Greater Kansas City Community Foundation. The board of directors took these steps to ensure the future of the Foundation as a community foundation. With this relationship, Greater Kansas City Community Foundation assists the Foundation with back office and legal support.



Current Funds of GNWKCF

DESIGNATED FUNDS

You can direct your gift to a specific nonprofit organization or purpose. Organizations may establish a fund through the Foundation; anyone can contribute to these designated funds to help build an organization's endowment or to support special projects.

- Greater Northwest Kansas Community Foundation Administrative Fund

FIELD OF INTEREST FUNDS

You can direct your gift to a nonprofit or organization that supports projects in an area of interest (ie history, arts, health, etc.)

- NWKS Healthy Communities Initiative Fund

SCHOLARSHIP FUNDS

Scholarships may be established by individuals or groups, giving a gift of education, providing a tangible commitment to the future and a vision of hope for the next generation.

- Wingfield Scholarship Fund

DONOR ADVISED FUNDS

These funds are easy for individuals, families and corporations to utilize as they are simple to set up and offer tax benefits. Donors may suggest grants to their favorite charitable organization, and address the issues and needs they care most about.

- Domsch Family Fund

ORGANIZATION FUNDS

You can direct your gift directly to a nonprofit organization to assist that organization with whatever needs arise.

- Kansas Wildlife Federation Foundation Fund

Current Affiliate Community Foundations



NRA Grant Provides Rifles for Youth Programs

In the summer of 2013 the National Rifle Association Foundation awarded the Kansas Wildlife Federation a grant for 10 Savage Rascal single shot .22 caliber rifles.

These rifles will be used to teach youngsters about firearm safety and shooting sports at the upcoming Outdoor Adventure Camp to be held in early June at Rock Springs Ranch.

They have already been used to provide firearms instruction and hunting safety to more than 800 boys and girls at the Lake Afton event.



KWF Outdoor Adventure Camp: A Summer Treat for Youngsters

The Kansas Wildlife Federation celebrated its 25th Outdoor Adventure Camp in 2013. OAC is a six-day summer camp for kids who either enjoy the outdoors or want to learn more about it. This conservation education program is co-sponsored by the Kansas Wildlife Federation and KSU Cooperative Extension Service. The camp is held at the Camp WaShunGa portion of Rock Springs 4-H Ranch, just south of Junction City.

If you are a Kansas youngster who enjoys the outdoors, now is the time to make plans to attend Outdoor Adventure Camp. Mornings will be spent traipsing the grounds with instructors, getting a hands-on feel for how various critters and plants live together in the ecosystem we call Kansas. Afternoons are spent learning about several areas of the outdoors, including mammals, insects, birds, fish and amphibians and reptiles. Ecology, wetlands, riparian areas and watersheds are some terms you will learn about at this unique camp.

Since the prairie does not go to sleep at sundown, neither will you. Depending on the evening, you may be out and about prowling for owls, stargazing, spotlighting spiders or watching bats gobble bugs.

Other activities include scavenger hunts, water sports including swimming and canoeing, fishing, shooting sports including rifle, shotgun, archery, and pellet gun. You'll pick your choices, or participate in all if you like.



The 2014 OAC is Sunday, June 1 through Friday, June 6. The camp is open to boys and girls ages 10 to 12 this summer. For more information or an application, call 785-526-7466. You can also go to the KWF website www.kswildlife.org for an application form.

Kansas Wildlife Federation Foundation Fund



The Kansas Wildlife Federation has established the Kansas Wildlife Federation Foundation through the Greater Northwest Kansas Community Foundation to ensure the future of the Kansas Wildlife Federation and its programs.

The official signing of documents took place Saturday, October 26, in Salina at the quarterly meeting of the Kansas Wildlife Federation Board of Directors.

Income from the Kansas Wildlife Federation Foundation will be used to further the mission of the organization: conserving and protecting wildlife and habitat; advocating for wildlife, sportsmen, and outdoor enthusiasts; and informing and educating Kansans of all ages about nature and the outdoors.



Troy Schroeder, KWF President stated, “the Kansas Wildlife Federation chose the GNWKCF because of their successful business model and diversity of groups they represent. However KWF is a statewide organization and funds going into the foundation will be solicited and used for projects statewide.”

Some Kansas Wildlife Federation Board of Directors have already made contributions individually to show their support of the newly formed Kansas Wildlife Federation Foundation. Contributions can be made at any time to the Kansas Wildlife Federation Foundation, PO Box 771282, Wichita, KS 67277. Anonymous donations can be made directly to GNWKCF P.O. Box 593 Bird City, KS 67731. Contributions can be in the form of cash, commodities, stocks, life insurance, equipment or real estate. Checks can be made to the *KWF Foundation*.

For more information on the KWF Foundation contact Troy Schroeder, KWF President, (785) 650-3182, Albert, KS or info@kswildlife.org; Nick Levendofsky, KWF Development Chairman, (785) 527-0941, Courtland, KS; or Catherine Domsch, Greater Northwest Kansas Community Foundation Executive Director, (785) 734-2556, Bird City, KS or cathy@gnwkcf.org.

“Serving as the host for the Kansas Wildlife Federation Foundation is an honor for me, and an amazing fit for both organizations. GNWKCF focus’ on rural community development, and the promotion of the traditions of hunting and fishing and conserving and protecting wildlife and habitat are essential to rural community development,” stated Catherine Domsch, Executive Director of Greater Northwest Kansas Community Foundation.

Bird City Century II Development Foundation

The Bird City Century II Development Foundation, Inc. was founded on December 17, 1985 with remaining funds from the Bird City centennial celebration earlier that year. Original founders of the Foundation include Edgar Robertson, Robert Brubaker, Floyd Jensen, Robert L. Jones, and Floyd Wright. The Foundation was organized for the betterment and benefit of the Bird City community, and continues to function as such. In 2009, Bird City Century II became an affiliate of GNWKCF.

The Foundation is a community foundation which represents an opportunity for all friends of the Bird City community to give, through philanthropy, back to the Bird City community to enhance and ensure the quality of life for present and future generations of Bird City.

In just the past decade, Bird City Century II Development Foundation has granted out more than \$1,000,000 to local organizations for community projects; of that amount, \$161,000+ has been awarded to Cheylin seniors through the Edgar and Mabel Robertson Scholarship.

The legacies left by the Robertson’s and Rosemary Griffin with their multi-million dollar bequests have made the ‘impossible’ possible in our community! The growth our Foundation has seen over the years has allowed many community development projects to happen in our community. Thank You to all of our donors!!



Funds of Bird City Century II Development Foundation

- Bird City Century II Business Incubator Program Fund
- Bird City Century II Community Initiative Fund
- Bird City Century II Scholarship Fund
- Bird City E-Community Fund
- Bird City 150th Celebration Fund
- Bird City Rural High School/Bird City Historic Preservation Fund
- Cheylin Schools Foundation Operating Fund
- GNWKS Real Estate Fund, LLC
- Martin Burton Family Fund
- Robert Brubaker Family Fund
- Thresher Association Endowment Fund

Bird City Century II Development Foundation

2013 Grants:

Bird City Century II Community Initiative Fund

American Legion Post #352	Assist with Operations	\$ 1,000.00
Bird City Fire Department	Garage Door Openers/Equipment	\$ 3,890.00
Bird City Girl Scouts	Replace Windows in Scout House at Park	\$ 1,000.00
Bird City Housing Authority	Replace Stoves in Apartments	\$ 4,400.00
Bird City Match Day	Matched Community Contributions	\$ 12,432.93
Bird City Public Library	Summer Reading Program Magic Show	\$ 500.00
Cheylin Entrepreneurship Fair	Top 3 Award Winners	\$ 1,000.00
Cheylin USD 103	Cheylin Preschool Funding (2013-14)	\$ 13,000.00
Cheylin USD 103	Assist with Replacement of Windows	\$ 25,000.00
Cheylin USD 103	New Flag Pole West of Cheylin HS	\$ 1,270.98
Cheylin USD 103	Teacher Grant-Classroom Supplies/Projects	\$ 2,436.37
Immanuel United Methodist	Community Easter Egg Hunt	\$ 100.00
Santa Day	Contribution	\$ 250.00
Tri-State Antique Threshers	Endowment Fund Match	\$ 1,000.00
Tri-State Antique Threshers	Children's Jump House Inflatables	\$ 600.00
Tri-State Antique Threshers	Match: New Building	\$ 50,000.00
Immanuel United Methodist	Promote Spiritual Growth	\$ 1,000.00
Living Water Fellowship	Promote Spiritual Growth	\$ 1,000.00
St. John Lutheran Church	Promote Spiritual Growth	\$ 1,000.00
St. Joseph Catholic Church	Promote Spiritual Growth	\$ 1,000.00
Wesleyan Community Church	Promote Spiritual Growth	\$ 1,000.00

Bird City Century II Business Incubator Fund

Kansas Small Business Development Center - Outreach Office	\$ 15,000.00
--	--------------

Total Grants in 2013: \$137,880.28

2013 Edgar and Mabel Robertson Scholarship Recipients:

Stephanie Busse \$750 	Heath Churchwell \$1,500 	Austin Cobb \$500 	Joshua Keltz \$1,500 	Adam Orten \$1,000 	Ruben Razo \$500 
Kenan Reeh \$2,000 	Cassie Rucker \$500 	Nakita Schneider \$1,500 	Grant Shrader \$750 	Jessica Smith \$500 	

**Total
Awarded:
\$11,000**

Sherman County Community Foundation

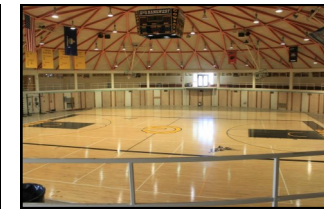
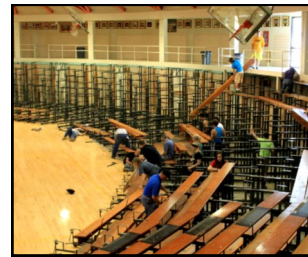
2013 Grants:

Sherman County Community Initiative Fund

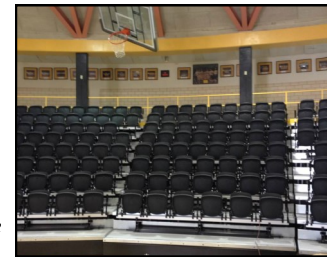
Goodland Activities Center	Goodland Baseball Club	\$ 826.37
Good Samaritan Society	Assist with Operations	\$ 208.03
Goodland Arts Council	Carnegie Arts Center Operations	\$ 176.16
GNWKTC-Carpentry Dept	Labor: Nativity Scene	\$ 800.00
City of Goodland	Flowers for Downtown Planters	\$ 889.02
Central School-Band Program	Refurbished Band Instruments	\$ 696.03
Total Grants in 2013		\$ 3,595.61

Black and Gold Booster Club Fund

Goodland USD 352	Max Jones Fieldhouse Bleacher Project	\$ 213,529.00
------------------	---------------------------------------	---------------



Photos courtesy of Gennifer House



Max Jones Fieldhouse Bleacher Project

Black and Gold Booster Club was approached to see if we would be interested in raising funds for the replacement of the bleachers in the Max Jones Field House. Construction of the building was completed in 1965, and original flooring, lighting and seating were still in place. We began fund raising with a contribution from Black and Gold funds and then began to market the program as "Bushels and Bucks for Bleachers". Original estimates for the replacement of the bleacher project was \$500,000. Shortly after the fund raising was started, an anonymous donor pledged \$250,000 for the project. Fund raising efforts continued via publication, gifts from USD 352 staff and employees, gifts from private donors, memorial gifts, a gift from the Northwest Kansas Technical College, other grants, and donations from the Topside Tipoff Committee and the Sherman County Alumni Association. The Alumni Association put together and funded the costs of a direct mailing to alumni from graduates of Goodland, Edson and Kanorado schools, as well as made a monetary contribution. The north side of the bleacher installation (stadium seating) was completed in August of 2013, about the time school started for the 2013-2014 year. Fund raising has continued and the order for bleachers for the south side installation has been placed.

As many will know, the 50th anniversary of the Max Jones Field House is fast approaching. It has hosted many events in our community. Since the time of the planning and building of the facility, it serves as a facility second to none from Denver, Colorado to Topeka, Kansas. All who have visited "The Max" have marveled at how we have such a facility in Northwest Kansas. Come celebrate with us!

Sherman County Community Foundation

Sherman County Community Foundation became an affiliate of GNWKCF in 2012. They are a charitable organization dedicated to strengthening the community for present and future generations. The Foundation is a non-profit vehicle for people of all means to make a lasting difference in our community. The Foundation is a flexible tool that can meet your charitable objectives while standing as a symbol of your caring for generations to come. It is the goal of the Foundation to provide leadership and act as a catalyst in identifying and addressing evolving community needs.

Our mission is to:

- ◆ Promote philanthropy
- ◆ Build and maintain a permanent collection of endowment funds
- ◆ Serve as a trustworthy partner and leader in shaping effective responses to community issues and address emerging community issues
- ◆ Provide professional administration for foundation funds

Funds of Sherman County Community Foundation

The Affiliate Board established the ***Sherman County Community Initiative Fund*** to support community development projects and programs in Sherman County.

In February 2013, the ***Black and Gold Booster Club Fund*** was established to provide operational support for the Black and Gold Booster Club and support for any USD 352 activities.

The ***Brianna Linin Memorial Scholarship Fund*** was established to fund a scholarship with first recipient(s) beginning in 2017; Brianna's graduating class.

The ***High Plains Museum Fund*** was created for the High Plains Museum for funds to be used as deemed appropriate by their board of directors.

The ***High Plains Museum Memorial Fund*** was created through memorial donations for funds to be used as deemed appropriate by the High Plains Museum board of directors.

2014 Sherman County Community Foundation

Board of Directors

Adam Dees, Chair	April Hall
Dane Scherling, Vice-Chair	Marilyn Imel
Kris Yost, Secretary	Sherida Shoff
Karen Gillihan, Treasurer	Michael Solomon

Bird City Century II Development Foundation

2013 (4th Annual) Cheylin Entrepreneurship Fair

1st Place (\$500) - Ivan Kemp - Kemp's Klean Kut Service

2nd Place (\$300) - Elizabeth Keltz - Elizabeth's Pigs

3rd Place (\$200) - Jacob Brubaker - Liberty League's Latest

E-Community Award: Jacob Brubaker - Liberty League's Latest (\$100)

E-Community Award: Mary Anne Orten - Mary Anne's Popcorn (\$100)



1st Place - Ivan Kemp



Foundation Grantmaking Hits \$1 Million Dollar Mark

In just the past decade, Bird City Century II Development Foundation has granted out more than one million dollars to local organizations for community projects; of that amount, \$161,000+ has been awarded to Cheylin seniors through the Edgar and Mabel Robertson Scholarship.

The legacies left by the Robertson's and Rosemary Griffin with their multi-million dollar bequests have made the 'impossible' possible in our community! The growth our Foundation has seen over the years has allowed many community development projects to happen in our community. Thank You to all of our donors!!

\$1.5 Million into Downtown

Bird City Century II Development Foundation has given back to the community in other ways than making grants to local organizations for projects. They have purchased and renovated buildings downtown as well, with the goal to preserve and sustain the downtown business community. Through the past 10 years or so, the Bird City Century II Development Foundation has invested over \$1.5 million into downtown Bird City.

Bird City Century II Development Foundation



Bird City Match Day Raises \$25,065 for Community Non-Profits

The First Annual “Bird City Match Day” was held on December 11th, a ‘giving event’ sponsored on behalf on Bird City Century II Development Foundation to raise awareness of, and funds for, our local non-profit organizations. Bird City Match Day raised a grand total of \$25,065.86 through cash, checks and grain contributions, which was then presented to a total of 21 non-profits in the Bird City/Cheylin communities.

Originally, Bird City Century II had agreed to MATCH the first \$10,000 in contributions that were made from the community that day, but due to some leftover funds in the Foundation’s grant-making budget, the Board of Directors decided to match \$12,432.93 (the full amount from the community to eligible organizations).

The non-profit organizations who received grant checks to assist with operations, projects, etc, include:

- | | |
|--|--|
| Bird City Community Club - \$3,494 | Bird City Historical Association - \$400 |
| Bird City Area on Aging - \$930 | Bird City Food Bank - \$1,370 |
| Bird City EMS - \$400 | Bird City Fire Department - \$1,275 |
| Cheylin Recreation Commission - \$1,209 | Bird City Housing Authority - \$1,000 |
| Bird City Cub Scouts - \$400 | Bird City Girl Scouts - \$400 |
| Teens For Christ - \$800 | Awana Youth Group - \$2,116 |
| St. John Catholic Youth Council - \$50 | Bird City Library - \$930 |
| United Methodist Youth Council - \$2,081 | Bird City Go-Getters 4H Club - \$400 |
| St. Joseph Catholic Youth Council - \$425 | Cheylin Wellness Center - \$4,279 |
| Threshers Assoc Endowment Fund - \$2,550 | Cheylin Band Department - \$75 |
| Tri-State Antique Engine/Threshers Assoc - \$480 | |



2014 Bird City Century II Development Foundation

Board of Directors

- | | |
|---------------------------|-------------------|
| David Hendricks, Chair | Clint Bursch |
| Gary Brubaker, Vice-Chair | Sherry Carmichael |
| Lori Janicke, Secretary | Jill Partch |
| Rod Klepper, Treasurer | C. Ned Smith |
| | Rod Young |

Sheridan County Community Foundation

Sheridan County Community Foundation became an affiliate of GNWKCF in 2012. The mission of Sheridan County Community Foundation is to encourage, prudently manage, and distribute charitable contributions to improve the quality of life for Sheridan County residents, now and in the future.



Funds of Sheridan County Community Foundation

The Affiliate Board established the *Sheridan County Community Initiative Fund* to support community development projects and programs in Sheridan County.

The *Sheridan County Health Complex Fund* was established for the benefit of the Sheridan County Hospital, aka Sheridan County Health Complex.

The *Mainstreet Beautification Fund* was created for beautification projects and programs in downtown Hoxie, KS.

In March 2013, the *Willis and Imogene Toothaker Scholarship Fund* was established; the annual net income from the Fund will provide annual scholarships to Hoxie USD 412 graduates, beginning in May 2020.

The *Kathy Bergin-Schiltz Memorial Fund* was established in June 2013; distributions from this Fund will help benefit Hoxie Schools and graduates of Hoxie Schools.

The *Youth on the Move Fund* was created with the focus on opportunities for youth in Sheridan County.

2014 Sheridan County Community Foundation

Board of Directors

- | | |
|----------------------------------|-----------------|
| Michelle Foote, Chair | Ladonna Joslyn |
| Jodi Rogers, Secretary/Treasurer | Harry Joe Pratt |
| | Leanna Sloan |

Norton County Community Foundation

In 2013, Norton County Community Foundation became an affiliate of GNWKCF.

Funds of Norton County Community Foundation

The NCCF Operating Fund was established to support the Norton County Community Foundation thru funding for operations, administration and general grantmaking.

The Norton County Endowment Fund was created with intentions to use the annual net income from the Fund for operations, administration and general grantmaking of the Norton County Community Foundation.



Photo by Janette Oswald

**"Dedicated to serving today for tomorrow,
to make our community a better place in which to live."**

Mission Statement of the Norton County Community Foundation

2014 Norton County Community Foundation

Board of Directors

Norman Nelson, Chair
 Doug Sebelius, Vice-Chair
 Scott Sproul, Secretary
 Christine Wayland, Treasurer

 Tara Vance, Executive Director

Carolyn Applegate
 Shad Chandler
 John Engelbert
 Aaron Herman
 Elaine Johnson
 Nancy Kent
 John Mapes
 John McClymont
 Colette Miller
 Gloria Nelson

Bird City Century II Development Foundation

GNWKS Real Estate Fund, LLC

The GNWKS Real Estate Fund LLC holds all real estate properties owned and managed by the Bird City Century II Development Foundation affiliate community foundation.

103 West 4th – former PrairieLand Electric building – to be used as a business incubator for blue collar businesses

107 West Bressler – BCCII/GNWKCF Offices

112 West 4th – building and equipment leased; Hometown Market

113 West Bressler – American Legion Hall

309 South Bird – building leased ; 2nd Beginning Thrift Store

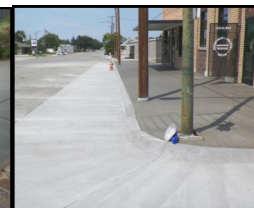
313/315 South Bird – Robertson-Griffin-Bacon Memorial Building; business incubator for start-up and expanding businesses.



Downtown Projects

2013 has been an eventful year as there have been many projects ‘in the works’ in downtown Bird City!! The American Legion Hall interior renovations were primarily finished up in early 2013 with the exception of the Flag Memorial Room, which was completed this summer.

Exterior sidewalks and curbs were replaced in front of the Bird City Century II Office, Legion Hall and Robertson-Griffin-Bacon Memorial Building in early August, and the concrete slab to the north of the RGB Bldg was also removed; grass to be planted this Fall until other decisions are made.



Gove County Community Foundation

Gove County Community Foundation became an affiliate of GNWKCF in 2012. The initial goal of the Gove County Community Foundation is to increase economic and community development opportunities in Gove County.

Funds of Gove County Community Foundation

The Gove County Community Foundation Board of Directors established the **Gove County Community & Economic Development Fund** to support community and economic development projects and programs in Gove County.

The **Fund for Grainfield** was created to support community and economic development projects in Grainfield, KS.



www.lovesmalltownamerica.com/govecountyks.php

2014 Gove County Community Foundation

Board of Directors

Adrian Coberly (Gove), Chair
Ericka Gillespie (Quinter), Secretary
Mitch Gillespie (Grainfield)
Terry Ostmeyer (Grinnell)

Ron Powers (Quinter)
Roger Ringer (Quinter)
Colleen Tummons (Quinter)
Duane Vollbracht (Grinnell)

Gove County Community Foundation



The City of Grainfield was awarded a \$20,000 grant through the Fund for Grainfield in November 2013.

The process of relocating and updating the K-State Research and Extension office in Gove County is still underway.

The Golden Prairie District executive board decided in the spring of 2013 to pursue the option to build a learning center on Main Street in Grainfield. The learning center will be the new location for the Gove County branch of Kansas State Research and Extension, and will include office space for extension personnel, a meeting room and a community multi-purpose area.

The Grainfield Community Development Committee worked with the City of Grainfield to purchase five lots on Main Street this past summer for the new location of the learning center. Their funding came through generous private donations to the *Fund for Grainfield* at the Gove County Community Foundation.

The board intends to apply for the tax credits in spring 2014 to pursue the goal of building a learning center in Grainfield.

